

# Tindal Square and Market Road Project Update



Transforming Tindal Square:  
Public Realm Improvements

## Bulletin No. 16

20<sup>th</sup> September 2022

### Contractor Details:

Tindal Square – Dyer & Butler

Market Road – Marlborough Ltd

Project Manager – Rob Venables/Phil Cowland

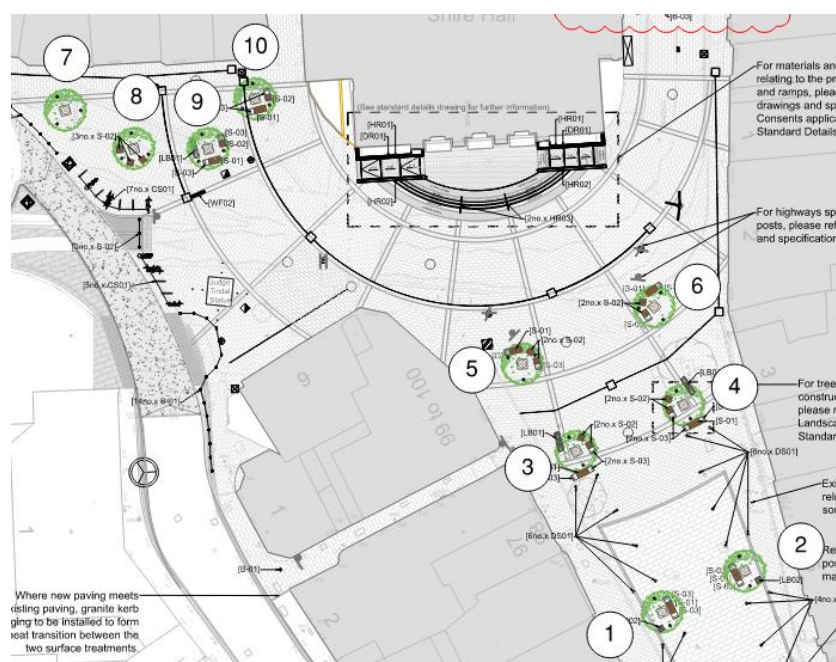


### Latest Achievements:

#### Tindal Square

The following has been accomplished since the last update:

- BT Openreach have continued to reconstruct the new underground chamber outside the Shire Hall.
- Tree pit five has been completed, the geo-modular crates installed and backfilled ready for the concrete and paving to be accomplished as the project moves forward.
- Continued with installing electrical ducting and underground chambers throughout the area.
- Concrete has been laid between The Garrison and William Hill in preparation for the new paving to be installed in this area.
- The new paving in areas seven, eight and nine has been substantially completed.



# Tindal Square and Market Road Project Update



Transforming Tindal Square:  
Public Realm Improvements

Bulletin No. 16

20<sup>th</sup> September 2022



# Tindal Square and Market Road Project Update



Transforming Tindal Square:  
Public Realm Improvements

## Bulletin No. 16

20<sup>th</sup> September 2022

### Next steps:

#### *Tindal Square*

The next stages in construction for the project are:

- Concrete will be laid within the site to allow the new paving to be progressed.
- The slot drain to the south of Tindal Square will be installed as the new paving reaches this level.
- The excavation will be complete for tree six which is the final tree pit installation for this project.
- The installation of electrical ducting and sleeves for the new lighting columns will progress.
- BT Openreach will complete their works to reconstruct the new underground chamber outside the Shire Hall. Once this is complete the works to the frontage of Shire Hall will commence.



# Tindal Square and Market Road Project Update



Transforming Tindal Square:  
Public Realm Improvements

## Bulletin No. 16

20<sup>th</sup> September 2022

### *Tindal Square*

#### ***BT Openreach – What do their works involve?***

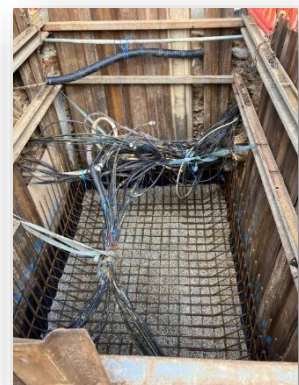
A major part of the works for the project is the relocation of the underground chamber to make room available to construct the new Shire Hall steps.

As you walk down any street you will notice concrete slabs in the ground with BT written on them just like the image below. Beneath these are underground chambers (known as inspection chambers) which house fibre optic cables that provide telephone and internet services to buildings in the area, instead of the overhead cables we would have seen many years ago and still present today in more rural areas.

Before the works of constructing the improved access to the Shire Hall could start we have commissioned BT to reconstruct their chamber as the graduated steps and ramp access to Shire Hall would have prevented access to the chamber – clearly access is needed for them to undertake any maintenance works in the future, and so an alternative entry facility is required. The works involved demolishing the existing chamber (whilst protecting and supporting the cables housed within it) and then rebuilding a new longer chamber which extended out beneath the footprint of the steps. This large access chamber also allows for the diversion of the cables within the existing chamber and for the addition of new cables to be added.

Over the course of three weeks BT Openreach have marked out the location for the new chamber and excavated the area prior to inserting the frame. Following this concrete is then poured to the bottom of the chamber along with steel reinforcement to the floor and walls of the chamber. After the cables have been diverted and the internal works to the chamber are complete a roof slab is made from concrete. Finally the small access cover is installed and the area backfilled and paved over.

The BT works are expected to be completed next week which frees up the area in front of Shire Hall ready for the installation of the steps and associated paving.



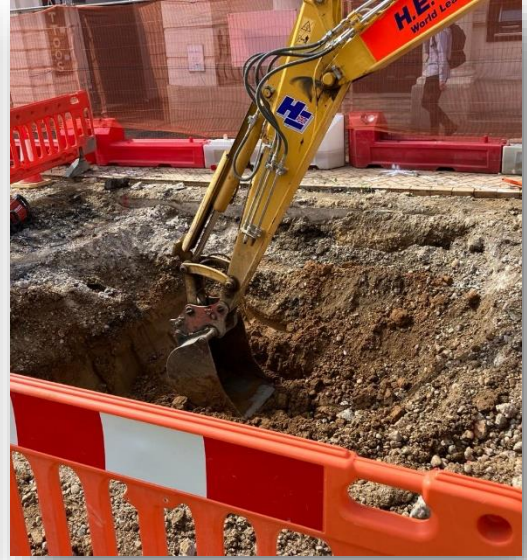
# Tindal Square and Market Road Project Update



Transforming Tindal Square:  
Public Realm Improvements

Bulletin No. 16

20<sup>th</sup> September 2022



# Tindal Square and Market Road Project Update



Transforming Tindal Square:  
Public Realm Improvements

**Bulletin No. 16**

**20<sup>th</sup> September 2022**

## ***Tindal Square – Safe walking routes***

The diagram below shows the safe walking routes over the next fortnight whilst the works to the central and northwest parts of the work area are completed. Please note access to businesses will be always maintained.



For further information regarding the project please visit:

[www.essexhighways.org/tindal-square](http://www.essexhighways.org/tindal-square)

For general enquiries please email: [tindalsquare@chelmsford.gov.uk](mailto:tindalsquare@chelmsford.gov.uk)